

PART OF S. 1/2 OF SEC. 9, T.5N, R.1W., S.L.B. & M.

129

SOUTH HEIGHTS ADDITION NO. 3 SUBDIVISION

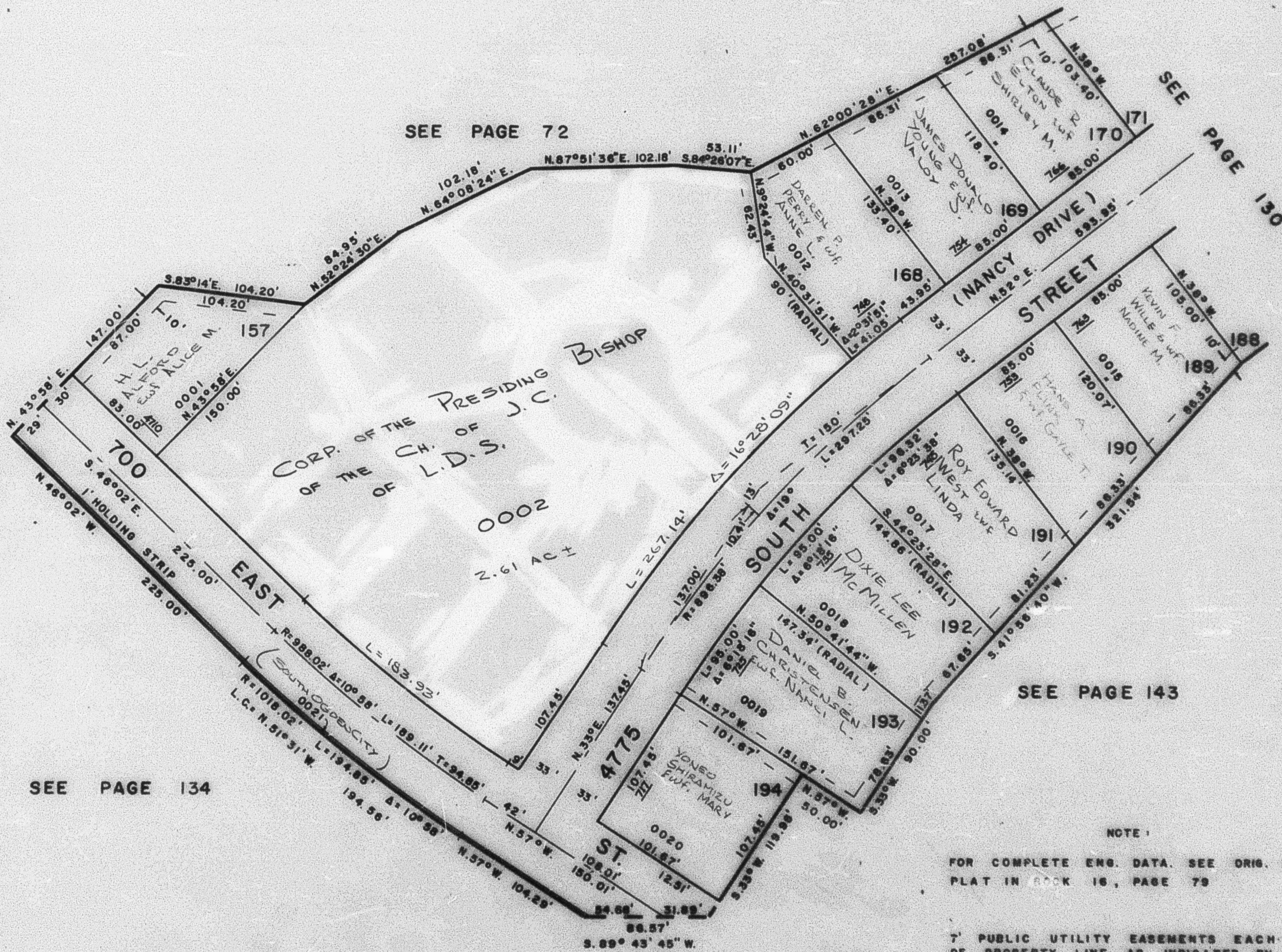
TAXING UNIT: 27

LOTS 157, 168 TO 170 & 189 TO 194

PREFIX: 06-129

IN SOUTH OGDEN CITY

SCALE 1" = 60'



SEE PAGE 72

SEE PAGE 130

SEE PAGE 143

SEE PAGE 134

NOTE 1

FOR COMPLETE ENG. DATA, SEE ORIG. DED. PLAT IN BOOK 18, PAGE 79

7' PUBLIC UTILITY EASEMENTS EACH SIDE OF PROPERTY LINE AS INDICATED BY DASHED LINES UNLESS OTHERWISE NOTED.